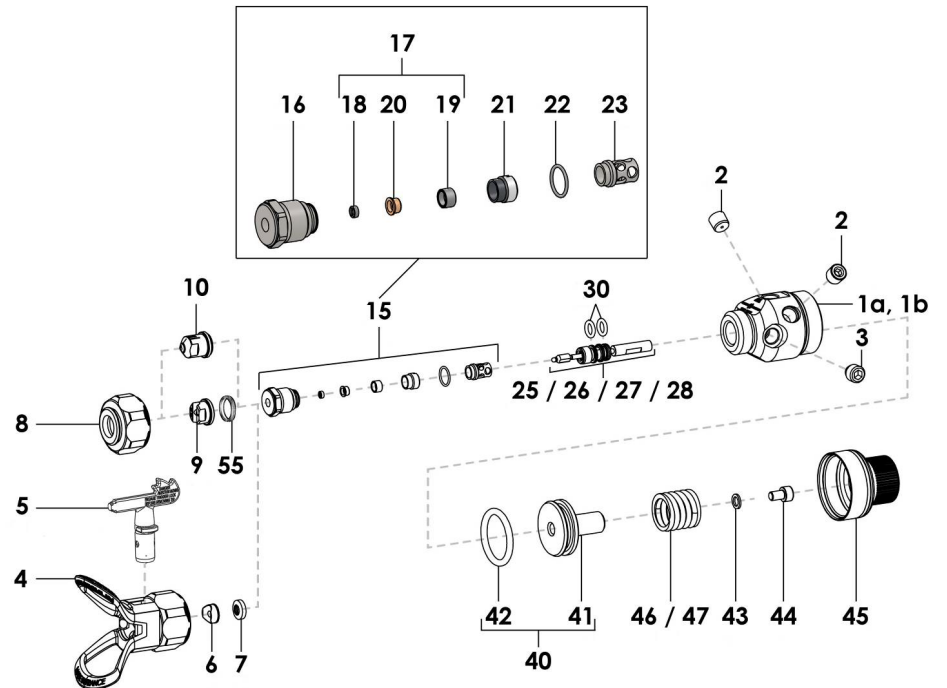
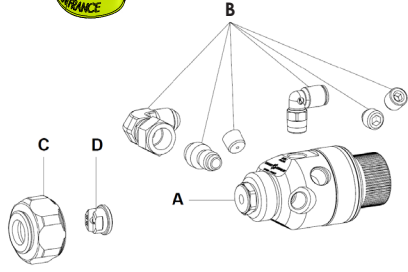


# ASC AIRLESS® GUN

## SPARE PARTS BREAKDOWN



<b>ASC</b>
<b>A / Gun</b>
<b>B / Fittings</b>
<b>C / Tightening Nut</b>
<b>D / Base Airless® Tip</b>



A / GUN - STAINLESS STEEL		
Airless® automatic spray gun, model ASC 240 with tightening nut for flat and Skill™ tip, without tip, with PTFE cartridge		129.982.121
Airless® automatic spray gun, model ASC 240 with tightening nut for reversing tip, without tip, with PTFE cartridge		129.982.122
Airless® automatic spray gun, model ASC 240 with tightening nut for flat and Skill™ tip, without tip, with GT cartridge		129.982.521
Airless® automatic spray gun, model ASC 240 with tightening nut for reversing tip, without tip, with GT cartridge		129.982.522
Airless® automatic spray gun, model ASC 400 with tightening nut for flat and Skill™ tip, without tip, with PTFE cartridge		129.984.121
Airless® automatic spray gun, model ASC 400 with tightening nut for reversing tip, without tip, with PTFE cartridge		129.984.122
Airless® automatic spray gun, model ASC 400 with tightening nut for flat and Skill™ tip, without tip, with GT cartridge		129.984.521
Airless® automatic spray gun, model ASC 400 with tightening nut for reversing tip, without tip, with GT cartridge		129.984.522

### FLAT TIP CHART -For P/N 000.00X.XXX, replace Xs with numbers engraved on tip

Calibre Size Größe	Ø, mm	Débit d'eau Water output Wasserdurchsatz Caudal agua (l / mn)	Diaphragme buse / Tip diaphragm / Vorzerstäuber / Restrictor boquilla	Largeur de jet à 25 cm / Spray fan width at 25 cm (10") Strahlbreite bei 25 cm Abstand / Ancho abanico à 25 cm													
				9	12	17	21	25	29	33	37	44	56				
03	0,18	0,23	12	03.03	03.05	03.07											
04	0,23	0,31	12	04.03	04.05	04.07	04.09	04.11	04.13								
06	0,28	0,46	12	06.03	06.05	06.07	06.09	06.11	06.13	06.15							
09	0,33	0,63	15	09.03	09.05	09.07	09.09	09.11	09.13	09.15	09.17						
12	0,38	0,86	15		12.07	12.09	12.11	12.13	12.15	12.17							
14	0,41	1,01	18	14.03	14.05	14.07	14.09	14.11	14.13	14.15	14.17	14.19					
18	0,46	1,34	18				18.09	18.11	18.13	18.15	18.17	18.19					
20	0,51	1,50	20		20.05	20.07	20.09	20.11	20.13	20.15	20.17	20.19					
25	0,56	1,88	20					25.11	25.13	25.15	25.17	25.19					
30	0,61	2,25	25			30.07	30.09	30.11	30.13	30.15	30.17	30.19					
40	0,66	3,25	25					40.11	40.13	40.15	40.17	40.19					
45	0,74	3,34	60			45.07		45.11	45.13	45.15	45.17	45.19	45.21				
68	0,91	5,60	60					68.11	68.13	68.15	68.17	68.19					

### SKILL™ TIP CHART -For P/N 000.30X.XXX, replace Xs with numbers engraved on tip

Calibre Size Größe	Ø, mm	Débit d'eau Water output Wasserdurchsatz Caudal agua (l / mn)	Diaphragme buse / Tip diaphragm / Vorzerstäuber / Restrictor boquilla	Largeur de jet à 25 cm / Spray fan width at 25 cm (10") Strahlbreite bei 25 cm Abstand / Ancho abanico à 25 cm								
				9	12	17	21	25	29	33	37	
03	0,18	0,25		03.07	03.09	03.11	03.13					
04	0,23	0,33		04.07	04.09	04.11	04.13					
06	0,28	0,49		06.07	06.09	06.11	06.13	06.15				
07	0,30	0,60	07.05	07.07	07.09	07.11	07.13	07.15				
09	0,33	0,69		09.07	09.09	09.11	09.13	09.15	09.17			
12	0,38	0,91					12.13	12.15	12.17			
14	0,41	1,17					14.13	14.15	14.17	14.19		
18	0,46	1,47					18.13	18.15	18.17	18.19		

### REVERSIBLE TIP CHART -For P/N 000.40X.XXX, replace Xs with numbers engraved on tip

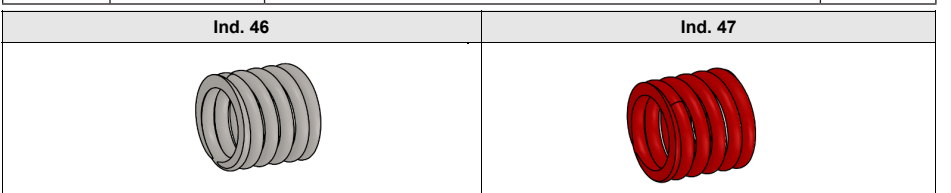
Fan width / Strahlbreite / Anchura abanico	Angle / Winkel / Abanico	Débit d'eau Water flow rate Wasserdurchsatz Caudal agua (l/mn) 70 bar / 1.015 psi							
		12 / 16 cm	17 / 21 cm	22 / 24.5 cm	25 / 29 cm	29 / 33 cm	33 / 37 cm	38 / 44 cm	
	20°	209	309	409	509	611	713	817	
	30°	211	311	411	511	611	713	817	
	40°	213	313	413	513	613	713	817	
	50°	215	315	415	515	615	715	817	
	60°	217	317	417	517	617	717	817	
	70°	219	319	419	519	619	719	819	
	80°	221	321	421	521	621	721	821	
0.22 l/mn		04	04-07	04-09	04-11	04-13			0.33 l/mn
0.33 l/mn		06	06-07	06-09	06-11	06-13	06-15		0.49 l/mn
0.45 l/mn		09	09-07	09-09	09-11	09-13	09-15	09-17	0.69 l/mn
0.60 l/mn		12	12-07	12-09	12-11	12-13	12-15	12-17	0.91 l/mn
0.72 l/mn		14	14-07	14-09	14-11	14-13	14-15	14-17	1.17 l/mn
0.95 l/mn		18	18-07	18-09	18-11	18-13	18-15	18-17	1.47 l/mn
1.33 l/mn		25		25-11	25-13	25-15	25-17	25-19	1.79 l/mn
1.6 l/mn		30		30-11	30-13	30-15	30-17	30-19	2.15 l/mn
2.175 l/mn		40		40-11	40-13	40-15	40-17	40-19	2.54 l/mn
2.38 l/m		45	329 45-09	429 45-11	529 45-13	629 45-15	729 45-17	829 45-19	3.42 l/mn
3.78 l/mn		68		68-11	68-13	68-15	68-17	68-19	4.42 l/mn
5.11 l/mn		100			539 100-13	639 100-15	739 100-17	839 100-19	5.42 l/mn

### COMMON PARTS

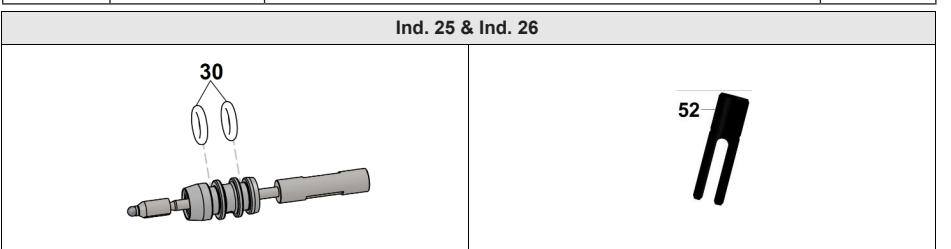
No.	Part Number	Description	S/P Level
2	129.990.029	Plug, model G 1/8 (x2)	2
3	129.982.001	Male plug	1
*15	129.740.040	Seat holder assembly	1
16	NC / NS	Seat holder	1
*17	129.740.908	Seat with PEEK seal (x2)	1
18	NC / NS	Helicoils (x2)	1
19	129.670.049	Seat carbide (x2)	1
20	NC / NS	PEEK seal (x2)	1
21	029.600.106	Screw for seat	1
*22	150.040.341	O-ring (x10)	1
*23	129.740.045	Cartridge stop (x5)	1
*40	129.982.045	Piston assembly	1
41	NC / NS	Piston	1
42	909.130.522	Piston seal	1
*43	NC / NS	Seal	1
44	88.127	Screw, model ChC M 5x8	1
45	129.982.041	Cylinder	1

### SPECIFIC PARTS

No.	Part Number	Description	S/P Level
1a	NC / NS	Gun body 240 bar	1
1b	NC / NS	Gun body 400 bar	1
4		Tightening nut for reversing TIP TOP	1
5+6+7		Reversing Airless TIP TOP + seat + seal tip	1
8		Tightening nut for flat & Skill™ tip	1
9		Airless tip	1
10		Skill™ tip	1



No.	Part Number	Description	S/P Level
46	150.314.106	Piston spring ASC 240 bar	1
47	150.314.107	Piston spring ASC 400 bar	1



No.	Part Number	Description	S/P Level
*25	129.990.040	GT cartridge-carbide needle assembly	1
*26	129.990.050	PTFE cartridge-carbide needle assembly	1
*27	129.990.080	GT cartridge-PEEK needle assembly	1
*28	129.990.070	PTFE cartridge-PEEK needle assembly	1
*30	129.990.063	Seal FFKM (x10)	1
*52	129.990.034	Tool	1

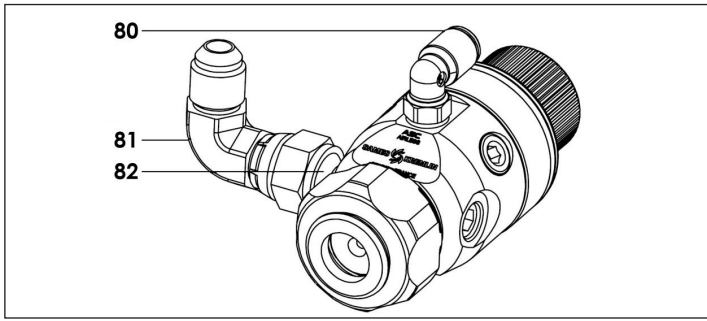
### KITS

No.	Part Number	Description	S/P Level
*	129.982.093	Package of seals (ind., 22, 30 (x2), 42, 43)	1

# ASC AIRLESS® GUN

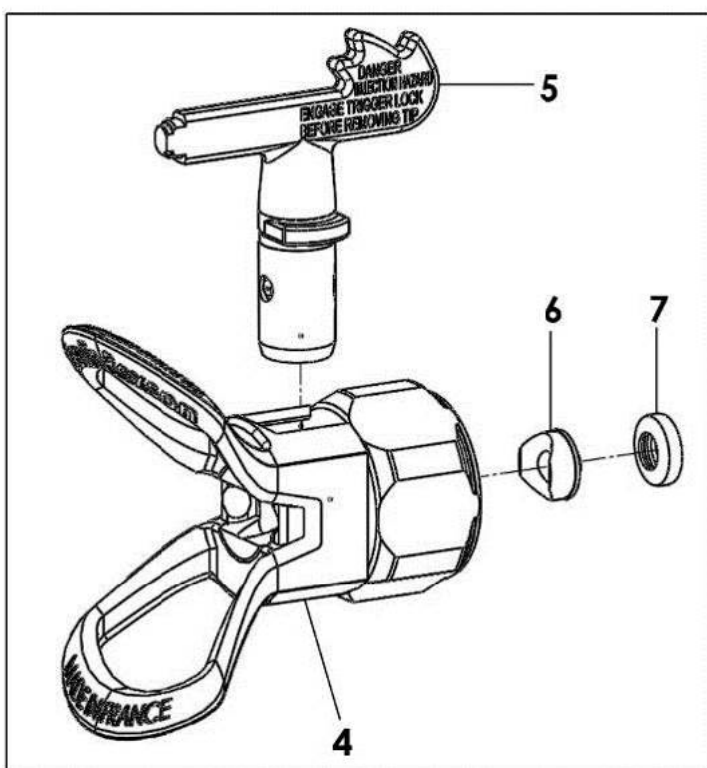
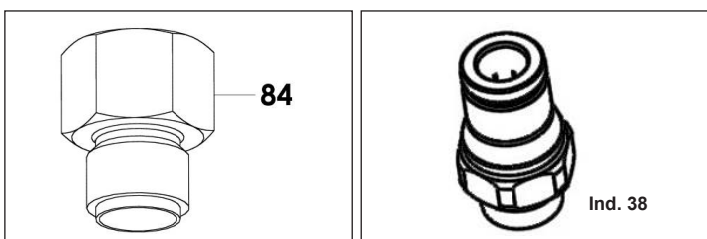
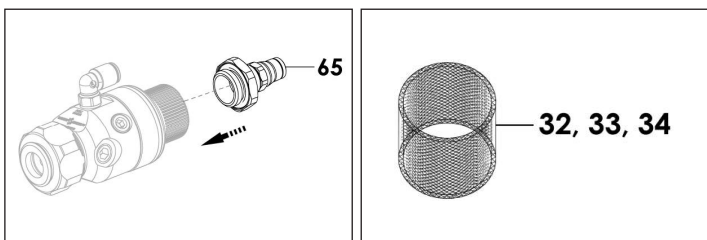
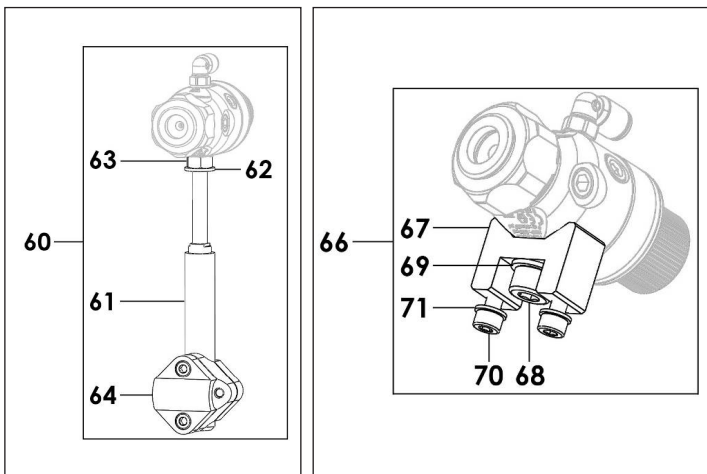
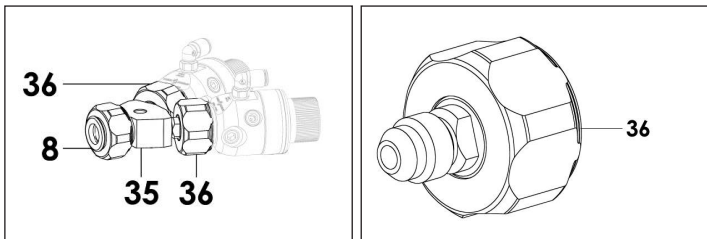
## SPARE PARTS BREAKDOWN

### B / FITTINGS



No.	Part Number	Description	S/P Level
80	905.120.902	Elbow fitting (control) 1/8 G - 4x6	1
81	905.160.101	Elbow fitting (product) M 1/2 JIC - F 1/2 JIC	1
82	129.982.003	Fitting (product) MG 1/8 - M 1/2 - JIC	1

### ACCESSORIES



### TOOLS

No.	Part Number	Description	S/P Level
50	921.080.301	Allen key size 4mm	1
51	906.300.101	Large size brush	1



### ACCESSORIES

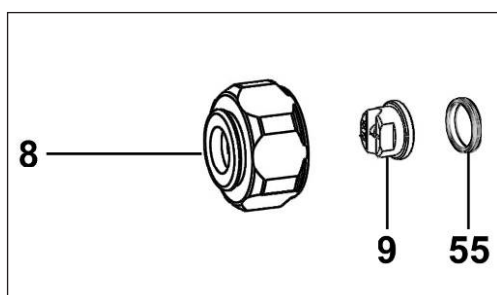
No.	Part Number	Description	S/P Level
32	129.982.021	N°4 Screen (x5)	1
33	129.982.022	N°6 Screen (x5)	1
34	129.982.023	N°12 Screen (x5)	1
35	129.982.060	Manifold for 2 guns	1
36	129.982.065	Manifold 1/2 JIC	1
60	049.351.000	Holding rod	1
61	049.351.001	T Rod	1
62	963.020.019	T Washer, model ZU 8	1
63	953.010.019	T Nut, model HM8	1
64	906.480.002	T Nuts	1
65	129.982.050	Closing support 4x6	1
66	129.982.030	Mounting support	1
67	029.982.031	T Support	1
68	930.151.198	T Screw, model CHc M 8x16	1
69	963.020.019	T Washer, model ZU 8	1
70	931.151.168	T Screw, model CHc M 5x12	2
71	963.040.014	T Washer, model Z M 5x10	2
84	050.123.304	Fitting M 1/4 NPS - F 1/2 JIC	1

### OPTIONS

No.	Part Number	Description	S/P Level
*38	129.990.062	Fitting (x2)	1

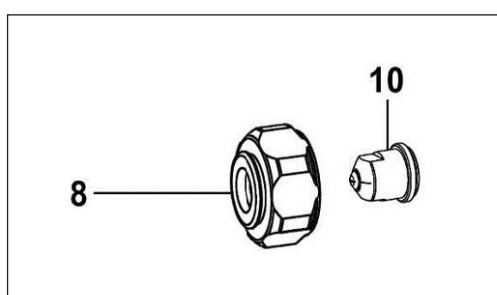
### TIP ACCESSORIES

No.	Part Number	Description	S/P Level
4	132.740.200	Airless® manifold for reversing Tip Top (refer to Doc. 573.148.080)	1
5-7	000.40X.XXX	Reversing Airless® Tip Top + seat + seal tip	1
*7	134.740.007	Reversing seal tip (x10)	1
*	129.740.907	Servicing kit - seat + seal tip (ind. 6 (x4), 7 (x4))	



### FLAT TIPS (see page 1 for chart)

No.	Part Number	Description	S/P Level
8	129.740.071	Tightening nut for flat and Skill™ tip	1
9	000.00X.XXX	Flat Airless® tip	1
55	150.041.319	Seal for flat tip (x5)	1



### SKILL™ TIPS (see page 1 for chart)

No.	Part Number	Description	S/P Level
8	129.740.071	Tightening nut for flat and Skill™ tip	1
10	000.30X.XXX	Skill™ tip	1
-	134.980.002	Package of bearing (x10)	1

## Sames

North America Headquarters 45001 5 Mile Road, Plymouth, MI 48170 | Toll: (800)573-5554 | Tel: (734)979-0100 | Fax: (734)927-0064

Canada Branch 931 Progress Avenue, Unit 7, Scarborough, ON M1G 3V5 | Toll: (800)450-0655 | Tel: (416)431-5017 | Fax: (416)431-9171