

Equipment

Designation	Version	Fluid inlet	Section rod	Drain rod	Paint filler	Air regulator	Seal	Part number
PUMP 80C220 CART MOUNTED UNIT WO HOSE WO GUN	Trolley	M 26x125	32 mm (1.1/4	-	♦	1	Lather + PE	151245980

Accessories

Designation	Part number
-------------	-------------

Kits

Designation	Part number
-------------	-------------

Spare Parts

Designation	Part number
-------------	-------------

80C220 Airless Paint Pump

Airless / Pumps



- Perfect for high solids materials
- Built with minimal parts
- Lowest cost of ownership

Markets



AGRICULTURAL



CONSTRUCTION



INDUSTRIAL



TRANSPORTATION



BOND • PROTECT • BEAUTIFY



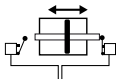
80C220 Airless Paint Pump

This paint pump is designed for rugged industrial applications & can feed two guns. It is recommended for long hose lenghts.

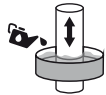
Technologies



Chevron Sealing



Switch Motor



Cup Lub



2 Ball



Triple Chrome Layer

Description

Performance:

- ◆ Constant delivery & pulse-free for heavy duty jobs

Productivity:

- ◆ Large foot valve to handle high viscosity materials up to 10,000 cPs
- ◆ Designed to eliminate dead zones and facilitate pump priming & flushing for time savings
- ◆ Quiet air motor - low noise, lubricant free.

Sustainability:

- ◆ Wetted parts - hard chrome stainless steel, treated stainless steel & stainless steel



Technical data table

Designation	Value	Unit: metric (US)
Pressure Ratio	80:1	
Maximum Fluid Pressure	480 (6960)	bar (psi)
Maximum Fluid Output	13.6	cc/mn (cfm)
Maximum Air Pressure	6 (87)	bar (psi)
Maximum Temperature	60 (140)	°C (°F)
Sound Level	72	dBa
Fluid Output at 30 cycles/mn	6.6 (1.74)	l/min (gal/mn)
Free Flow Rate	13.6 (3.59)	l/mn (gal/mn)
Air Consumption at 30 cycles/mn at 4 bar (60 psi)	190 (101.6)	m³/h (cfm)
Air Inlet	F 3/7" BSP	
Fluid Outlet	M 3/4" JIC	
Fluid Inlet	1"	
Number of Cycles per liter of products	4.5	
Height	136 (53.5)	cm (in)
Wetted Parts: Aluminum, Stainless Steel	•	
Width	74 (29.1)	cm (in)
Depth	83 (32.7)	cm (in)
Sealing Packings Upper and Lower: Leather + PE	•	
Weight	125 (275.6)	kg (lbs)