

Equipment

Designation	Fluid Inlet fitting	Suction	Stand	Filter & drain rod	Fluid pressure regulator	Atomizing air regulator	Part number
AIRLESS PUMP 35C50 MBA W/M M26x125	M26x125	-	Wall Mounted	-	•	-	151148200
AIRLESS PUMP 35C50 MBA W/M M26x125 SUCTION D25	M26x125	D25	Wall Mounted	-	•	-	151148300
AIRLESS PUMP 35C50 MBA W/M M26x125 FILTER + SUCTION D25	M26x125	D25	Wall Mounted	•	•	-	151148350
AIRLESS PUMP 35C50 MBA W/M F1/2	F1/2 BSP	-	Wall-mounted	-	•	-	151148150

Accessories

Designation	Part number
GRAVITY HOPPER 6 LITERS	151140230
DOUBLE POST CART	151241000

Kits

Designation	Fluid Inlet fitting	Suction	Stand	Filter & drain rod	Fluid pressure regulator	Hoses	Spray gun	Part number
Sflow 275 + 35C50	M26x125	D25	Wall Mounted	•	•	•	•	151148550

Spare Parts

Designation	Part number
GT CARTRIDGE	144135205
HYDRAULIC SERVICING KIT	144135237
MB-A CARTRIDGE	144135365
AIR MOTOR SERVICING KIT	144160191

35C50 Airless

Paint pump

Airless / Pumps



AIRLESS® PRODUCTIVITY FOR ALL

- Designed for long-lasting industrial use
- Fast color changes with minimum solvent consumption
- Simple design to minimize maintenance time and operation

Markets



BOND • PROTECT • BEAUTIFY



35C50 Airless

Paint pump

The 35C50 Airless paint pump ensures constant and pulse-free delivery for superior, industrial finishing.

The **35C50 Airless paint pump** will deliver excellent performance and outstanding benefits because of our proven pumping technology. With a powerful air motor, the 35C50 can feed up to 2 SFlow® Airless spray guns. It can handle material viscosities from 20 cps up to 5000 cps with very low air consumption. It comes with an optimized volume fluid section for fast color changes with minimal material loss.

The **35C50 Airless paint pump packages** are ready to spray systems, available in **wall-mount versions** with cart as an option. Packages are available with the SFlow® Airless manual spray gun equipped with a 12.13 (515) reversible tip and 7.5 m (25ft) fluid hoses. A large variety of accessories are recommended to meet various customer needs.

This pump is also available as **Airmix®** system with **Xcite®** spray gun.

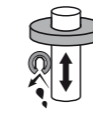


Technical data table

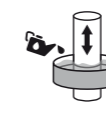
Designation	Value	Unit: metric (US)
Pressure Ratio	35	
Maximum Fluid Pressure	210 (3000)	bar (psi)
Recommended Fluid Output	750	cc/mn (cfm)
Maximum Fluid Output	1000	cc/mn (cfm)
Maximum Air Pressure	6 (87)	bar (psi)
Air Consumption	15	m³/h (cfm)
Maximum Temperature	60 (140)	°C (°F)
Fluid Output at 30 cycles/mn	1.5 (0.4)	l/min (gal/mn)
Fluid Volume per Cycle	50	cc
Free Flow Rate	3 (0.79)	l/mn (gal/mn)
Fluid Output at 15 cycles / mn	0.75	l/mn (gal/mn)
Seal Packings	MB-A cartridge	
Fluid Outlet	M 1/2 JIC	
Fluid Inlet	M 26x125	
Height	58.5	cm (in)
Width	15.9	cm (in)
Depth	16	cm (in)
Wetted Shares: Stainless Steel	♦	
Weight	8	kg (lbs)



Technologies



GT Sealing



Cup Lub



2 Ball



Triple Chrome Layer

Performance

- 1 Quiet and balanced air motor for constant delivery
- 1 Due to fast motor inversion at very low air pressures, there is limited pulsation
- 2 Stainless-steel fluid section adapted to a wide range of materials including water-based paints
- 3 Designed to eliminate dead zones for quick color changes
- ♦ Pulse-free for a superior finish
- ♦ Able to flush and prime at very low air pressures (0.6 bar/8.5 psi)

Productivity

- 3 Large foot valve to handle high viscosity materials up to 5,000 cPs - carbide seat
- 4 Reduced fluid section volume minimizes product and solvent losses during flushing.
- 5 Closed construction decreases the risk of injuries and protects the lubricant from external contamination
- 5 Leak indicator weep hole for fast visual inspection
- 6 Easy rotating outlet fitting to fit various configurations

Sustainability

- 1 Stall-free Differential Air Motor won't ice up
- 3 Easy to service with direct access to the suction valve
- 4 Single piece built-in cartridge with no dead zone
- 6 Easy coupling for a quick disassembling
- ♦ Mobile seal located on the piston ensures the cleaning of the fluid section internal wall while the paint pump is operational
- ♦ Low maintenance, no external air distributor which allows 45% fewer parts vs our competition
- ♦ Triple chrome-plated piston parts compatible with most materials
- ♦ Magnetic reversing valve to eliminate pump surge
- ♦ Reduced spare parts: 50% fewer parts vs competition



Description

