

### Equipment

Designation	Setup	Atomization air regulator	Air regulator fluid pressure	Additional regulator	Suction rod	Drain rod Ø6x8	Pump output filter	Part number
02C85 BARE PUMP	Standard, Bare	-	-	-	-	-	-	144941000
02C85 WALL-MOUNTED	Standard, Wall-Mounted	+	+	-	+	-	-	151760200
02C85 SST BARE PUMP	Stainless Steel, Bare	-	-	-	-	-	-	144940000
02C85 SST WALL-MOUNTED	Stainless Steel, Wall-Mounted	+	+	-	+	-	-	151761200
02C85 SST WALL-MOUNTED + REGULATORS	Stainless Steel, Wall-Mounted	+	+	+	+	-	-	151761400

### Accessories

Designation	Details	Part number
Stainless fitting m 1/2 JIC f 3/8 nps	SST Fitting F 3/8 for Electrostatic	050123306
Kit sst suction rod d.16 w/connector 18x125 + strainer	SST Suction rod with Ø16 hose, strainer and fitting 18x125	049596010
Essential Cart		151730140

### Spare Parts

Designation	Details	Part number
MAINTENANCE PACKAGE FOR 350 MOTOR	Seal kit for the air motor	144850150
SEALS TO KIT FOR HYD 75	Seal kit for the fluid section	144941490
SERVICING KIT FOR HYD. 75	Service kit (Seal kit + Fluid Section components) for the fluid section	144941495

## 02C85

Airspray Paint Pump

Airspray / Pumps



### THE POCKET PISTON PUMP

- Compact Design: easy to integrate
- Simplified Maintenance and servicing
- Reinforced reliability: GT seals

### Markets



BOND • PROTECT • BEAUTIFY



# 02C85

## Airspray Paint Pump

Thanks to its compacity, the 02C85 pump saves waste during flushing and quick color changes. The fluid section special design combined to GT seals allow priming at very low pressure for a large range of viscosities.

Airspray 02C85 piston pump is based on 80 years of **Sames** technical expertise, innovation and dedication to our customers. This pump is designed to apply a large range of materials while reducing labor and maintenance costs and articulates around 3 strong themes: Efficiency, Optimization and Simplicity.

Together with **Sames** airspray guns, the Airspray 02C85 piston pump provides exceptional performances (Quality of finish, high transfer efficiency). To meet all customer requirements, the multipurpose design allows a use in various airspray & electrostatic airspray applications.



### Technical data table

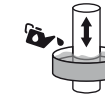
Designation	Value	Unit: metric (US)
Pressure Ratio	2:1	
Maximum Fluid Pressure	10 (144.9)	bar (psi)
Maximum Air Pressure	6 (87)	bar (psi)
Maximum Temperature	60 (140)	°C (°F)
Cylinder	85 (2.9)	cc (oz)
Sound Level	81	dBa
Fluid Output at 30 cycles/mn	2.6 (0.7)	l/min (gal/mn)
Free Flow Rate	5.1 (1.3)	l/mn (gal/mn)
Air Consumption at 30 cycles/mn at 4 bar (60 psi)	2.1 (1.2)	m³/h (cfm)
Air Inlet	F 3/8" BSP	
Fluid Outlet	M 3/8" NPS	
Fluid Inlet	M 18x125	
Number of Cycles per liter of products	12	
Sealing Packing Lower Acetal Resin Seal	♦	
Sealing Packing Upper GT cartridge with polyethylene packing	♦	
Height	41 (16.1)	cm (in)
Wetted Parts: Aluminum, Stainless Steel	♦	
Width	28 (11)	cm (in)
Depth	17 (6.7)	cm (in)
Weight	5 (11)	kg (lbs)



### Technologies



GT Sealing



Cup Lub



2 Ball



Triple Chrome Layer

### Performance

- ♦ Chrome treated stainless steel for an improved abrasion resistance and low friction
- ♦ Quiet and balanced air motor for a constant delivery
- ♦ Easy priming/flushing thanks to pump priming at very low air pressure

### Productivity

- ♦ Less friction
- ♦ Large foot valve to handle material viscosity up to 2 000 cPs
- ♦ Designed to eliminate dead zone: facilitates priming and flushing and prevents any product loss

### Sustainability

- ♦ Reliable air motor: 45% less spare parts than competitors
- ♦ Optimized fluid section: 50% less parts than competitors
- ♦ Treated stainless steel fluid section: compatible with water-based materials
- ♦ Closed construction for protection against dust and operator safety
- ♦ Optimum seal performance: upper spring loaded GT packing + PTFEG polyfluid seal
- ♦ Use of a single GT seal: no throat packing maintenance and lower friction



### Description

