

## 30C25

Airmix® Paint Pump

Airmix® / Pumps



### ACCELERATOR OF PERFORMANCE

- Efficiency - perfect for Airmix® finish
- Optimization - built with minimal parts
- Simplicity - lowest cost of ownership

### Markets





# 30C25

## Airmix® Paint Pump

This compact Airmix® paint pump is the ideal partner for your Airmix® spray guns providing exceptional finish quality & high transfer efficiency.

The **30C25 Airmix® paint pump** delivers excellent performance and outstanding benefits because of our proven pumping technology. The 30C25 compact Airmix® paint pump is recommended to handle all types of materials ranging from low to medium viscosity. It comes with an optimized volume fluid section for fast color changes with minimal material loss.

The **30C25 Airmix® paint pump packages** are available in **wall-mount versions** with stand mounting as an option. Packages are available with (1) Xcite™ 200 bar Airmix® manual spray gun and 7.5 m (25ft) air and fluid hoses. A wide variety of options are available to meet all customer requirements.



## Technical data table

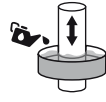
Designation	Value	Unit: metric (US)
Pressure Ratio	30/1	
Maximum Fluid Pressure	180 (2610)	bar (psi)
Maximum Air Pressure	6 (87)	bar (psi)
Air Consumption	7.1 (4.18)	m³/h (cfm)
Maximum Temperature	60 (140)	°C (°F)
Cylinder	25 (0.84)	cc (oz)
Weighted Sound Level	74.9	dBA
Recommended Air Pressure	2 - 5 (29 - 72.5)	bar (psi)
Fluid Output at 30 cycles/mn	0.75 (0.2)	l/min (gal/mn)
Fluid Output at 20 cycles/mn	0.5 (0.13)	l/mn (gal/mn)
Fluid Volume per Cycle	25	44
Free Flow Rate	1.5 (0.39)	l/mn (gal/mn)
Fluid Output at 15 cycles / mn	0.375 (0.01)	l/mn (gal/mn)
Air Consumption at 30 cycles/mn at 4 bar (60 psi)	7.1	m³/h (cfm)
Displacement Per Cycle	25 (1.52)	cc (cubic inch)
Motor Type	420-4	
Air Inlet	F3/8" BSP / F3/8" BSP	
Fluid Outlet	F3/8" NPS / M1/2" JIC	
Fluid Inlet	F 1/2" BSP / M26x125	
Hard Chrome Stainless Steel, Wetted Parts	♦	
Number of Cycles per liter of products	40	
Sealing Packing Upper GT cartridge with polyethylene packing	♦	
Height	57.5 (22.6)	cm (in)
Width	32 (12.6)	cm (in)
Depth	17 (6.69)	cm (in)
Wetted Shares: Stainless Steel	♦	
Weight	7.7 (17)	kg (lbs)



## Technologies



GT Sealing



Cup Lub



2 Ball



Triple Chrome Layer

## PERFORMANCE

- 1 Differential air motor keeps paint pump from frosting over
- 1 Priming at very low air pressures (0.6 bar)
- ◆ Constant and pulse-free delivery for superior finish

## PRODUCTIVITY

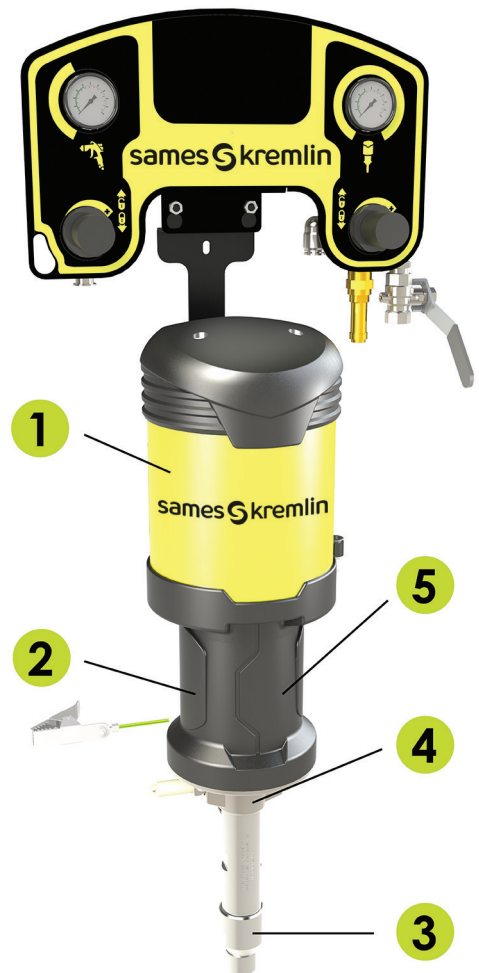
- 1 Quiet air motor
- 2 A closed construction prevents risk of injuries and protects lubricant from external contamination
- 2 Designed to eliminate dead zones and facilitate pump priming and flushing
- 3 Large foot valve to handle medium viscosity materials
- 4 Easy, rotatable outlet fitting for quick maintenance
- 5 Leak monitoring wind hole for fast control

## SUSTAINABILITY

- 1 Air motor (45% spare shares vs competitors for maintenance)
- 2 Ultra coated plugger for less friction and improved abrasion resistance
- 2 Single GT seal to avoid throat packing maintenance and low friction, large lubricant wet cup



## Description



## Equipment

Designation	Version	Fluid inlet	Suction rod	Paint filter	Air regulator	Seal	Part number
30C25 PUMP W/O FILTER W/O SUCTION ROD	Wall	M 26x125	-	-	2	GT	151145000
30C25 PUMP W/O FILTER WITH SUCTION ROD	Wall	M 26x125	16 mm (5/8")	-	2	GT	151145100
30C25 PUMP W/O FILTER, WITH SUCTION ROD DIAM 25	Wall	M 26x125	25 mm (1")	-	2	GT	151145150
30C25 PUMP WITH FILTER & SUCTION ROD DIAM 16	Wall	M 26x125	16 mm (5/8")	◆	2	GT	151145200
30C25 PUMP WITH FILTER & SUCTION ROD DIAM 25	Wall	M 26x125	25 mm (1")	◆	2	GT	151145250
30C25 PUMP W/O FILTER W/O SUCT ROD FLUID INLET F1/2	Wall	F 1/2 BSP	-	-	2	GT	151145320
30C25 PUMP MB-A ASP. M26x125 WO FILTER WO ROD	Wall	M 26x125	-	-	2	MB-A	151145400
30C25 PUMP MB-A ASP. F1/2 WO FILTER WO ROD	Wall	F 1/2 BSP	-	-	2	MB-A	151145450
30C25 PUMP MB-A ASP. M26x125 WO FILTER WITH ROD D25	Wall	M 26x125	25 mm (1")	◆	2	MB-A	151145600
30C25 PUMP AIRLESS® AIR SUPL W/O PRODUCT FILTER	Wall	M 26x125	-	-	1	GT	151145050
30C25 PUMP AIRLESS® AIR SUPL WITH FILTER & SUCTION ROD DIAM 25	Wall	M 26x125	25 mm (1")	◆	1	GT	151145300
30C25 PUMP MB-A ASP. M26x125 WO FILTER WITH ROD D16	Wall	M 26x125	16 mm (5/8")	-	2	MB-A	151145550
30C25 PUMP MB-A ASP. M26x125 WO FILTER WITH ROD D25	Wall	M 26x125	25 mm (1")	-	2	MB-A	151145650
30C25 PUMP MB-A ASP. M26x125 WITH FILTER WITH ROD D16	Wall	M 26x125	16 mm (5/8")	◆	2	MB-A	151145700

## Accessories

Designation	Part number
DRAIN ROD D16 S/S CONNECTOR 18X125	049596000
SUCTION ROD DIAM 16 (FITTING F26x125) FOR C25 PUMP	149596050
SUCTION ROD D16 (FITTING F26x125) FOR 200 L DRUM	149596060
SUCTION ROD DIAM 25 (FITTING F 26x125) FOR C25 PUMP	149596150
SUCTION ROD D25 (FITTING F26x125) FOR 200 L DRUM	149596160
STAND MOUNTING W/O W/M PUMP BRACKET	151140210
GRAVITY HOPPER 6L FOR C25 PUMP	151140230
TOTEM FOR WALL MOUNTING W/O PUMP BRACKET+ ACCESSORY HOLDER	151140240
FLUID FILTER 3/8 (INLET F1/2JIC - OUTLET M1/2JIC)	155580600

## Spare Parts

Designation	Part number
SERVICING PACKAGE FOR 420-4 MOTOR	144130190
SERVICING PACKAGE FOR FLUID SECTION C25	144130291



www.sames.com

NORTH AMERICA HEADQUARTERS  
 45001 5 Mile Road, Plymouth, MI 48170  
 Ph: 800.573.5554  
 CANADA BRANCH  
 931 Progress Ave, Unit 7, Scarborough, ON M1G 3V5  
 Ph: 416.431.5017  
 Email: marketing.us@sames.com